

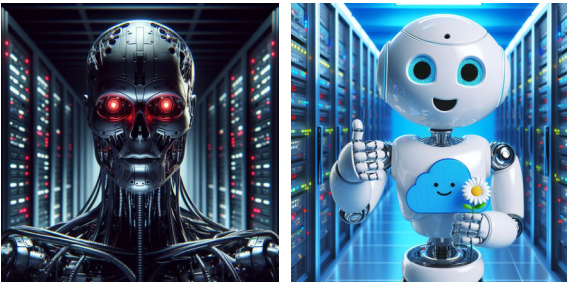
Generative Artificial Intelligence (AI): Risks and guidance

Adam Hall

Slide 1

1

What is artificial intelligence?



Slide 2

2

What is generative artificial intelligence?

Generative artificial intelligence refers to AI systems capable of creating new content, such as images, text, music, or even videos, that mimic human-like creativity. These systems learn patterns from existing data and use them to generate new, original content. Generative AI has applications in various fields, including art, entertainment, and content creation.

Slide 3

3

Crown Law
QUEENSLAND

What are the potential risks with AI?

- Transparency**
 - Not always clear how AI has reached a conclusion
- Bias and discrimination**
 - Algorithms perpetuate and exacerbate existing bias and discrimination
- Intellectual property**
 - Who owns copyright in material produced by AI?
 - How can it be used?

– continues

Slide 4

4

Crown Law
QUEENSLAND

What are the potential risks with AI?

- Privacy**
 - Disclosure of information to AI system
 - AI systems may access other databases
- Accuracy**
 - Inaccurate information or lack of understanding of reasoning
 - Human review still required
- Liability**
 - Who is responsible for accuracy of outputs?

Slide 5

5

Crown Law
QUEENSLAND

Queensland Government position

Use of Generative AI in Queensland Government Guideline: Provides guidance on use of generative AI by Queensland Government employees

QChat: Queensland Government's AI-powered assistant

- operated by Queensland Government Customer and Digital Group (QGCDG)
- based on ChatGPT-4 through Microsoft Azure OpenAI
- exclusively for use by Queensland Government employees
- intended for use with only publicly accessible information

Draft Artificial Intelligence (AI) Governance Policy: Two requirements:

1. Departments must conduct evaluation process, including risk assessment, before using AI
2. Departments must establish AI governance arrangements based on ISO/IEC 38507:2022 – Information technology: Governance implications of the use of AI by organisations.

Slide 6

6

Crown Law
QUEENSLAND

Queensland Government position

Draft Fast AI Risk Assessment (FAIRA) Guideline: Used to comply with policy requirement to conduct a risk assessment

Future Artificial Intelligence (AI) Governance Guideline: Guideline to assist Departments with implementing the AI Governance Policy

Future Guidance on using Microsoft Copilot – Microsoft’s AI tools for MS Word, Outlook, Teams, Excel and PowerPoint.

Slide 7

7

Crown Law
QUEENSLAND

Key points from Use of Generative AI Guideline

- Official government information and personal information must **not** be shared
- Seek guidance from ICT/Legal/Privacy/RTI teams
- Intention is for internal generative AI capability (QChat) to be developed as preferred option
- Employees are responsible for the information shared with generative AI systems and any AI generated content shared in the performance of duties
- Content produced by generative AI systems should be carefully reviewed
- Existing policies and legislation apply.

Slide 8

8

Crown Law
QUEENSLAND

How should generative AI be used?

- Understand and test AI systems before use
- Conduct periodic audits of AI systems
- Monitor and record use of AI systems
- Provide training for all users
- Develop user / prompt guide, including examples
- Only use anonymised data and information in inputs
- Prepare an incident response plan.

Slide 9

9

Crown Law
QUEENSLAND

Resources

- Use of Generative AI in Queensland Government Guideline – [Use of generative AI in Queensland Government | For government | Queensland Government](#)
- QChat – [QChat | For government | Queensland Government](#)
- Australia's Voluntary Artificial Intelligence Ethics Framework – [Australia's Artificial Intelligence Ethics Framework | Department of Industry, Science and Resources](#)
- Australia's Interim Response to Safe and Responsible AI Consultation (2024) – [The Australian Government's interim response to safe and responsible AI consultation | Department of Industry Science and Resources](#)
- Australia's Artificial Intelligence Action Plan (2021) – [Australia's Artificial Intelligence Action Plan | Department of Industry, Science and Resources](#)

Slide 10

10

Crown Law
QUEENSLAND

Questions?

Slide 11

11
